

BIT & BEAT BLUEDAC

HIGH DEFINITION BLUETOOTH DIGITAL CONTROLLER
DSD 256, 384kHz/32bit

INSTRUCTION BOOK

DAC, DDC Audio Controller
Computer and smart device-centered digital audio playback
Low-cost, high-quality sound reproduction

High-quality playback beyond CD available
32bit / 384kHz, DSD256 studio original sound reproduction
Streaming services over the network available

Convenient scalability
Easy to use via USB
Wireless connection via Bluetooth
DDC, DAC function can connect existing audio system

- . Please be sure to read the "USER MANUAL" before using and then use accurately.
- . The information contained in this USER MANUAL is subject to change without prior notice in order to improve the performance of the product.



BIT & BEAT BLUEDAC

High Definition Bluetooth Digital Controller

CONTENTS

Product Introduction / Features / Components	01
Product Structure	02
Product Usage	03
Wireless Configuration Method	04
Installing the Driver	05~07
Product Specifications	08
Safety Precautions	09
How to Fix Problems	10
Product Warranty	11

Product Introduction

BIT & BEAT의 BLUEDAC is a USB-DAC device of the latest audio trend; an up-to-date Hi-Fi DAC that can reply DSD64(2.8MHz) / DSD128(5.6MHz) / DSD256(11.2MHz).

Especially, as radio transmission using bluetooth realizes HI-FI Sound difficult to feel in existing wireless environment s, your smartphone will make music life convenient and pleasant.

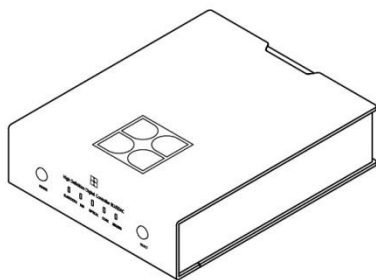
Product Features

BIT & BEAT BLUEDAC is a high-tech product that performs the following functions to reproduce excellent sound.

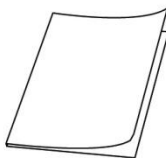
Using the X-MOS microprocessor of X-MOS in UK, it supports 32bit 384kHz through the USB High Speed interface and DSD Native DSD256 to reproduce sound of various file formats.

- DSD direct playback method
Playback of DSD64, 128, 256 sound source through DSD Native function
- XMOS USB Solution
Equipped with XMOS chipset for PC-FI users
- Wireless transmission function
Bluetooth function for convenient music listening using smart devices
- MQS (Mastering Quality Sound) playback function
32bit / 384kHz sound source file playback function

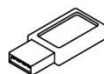
Product Components



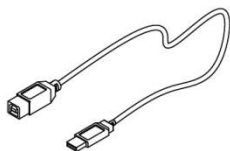
BLUEDAC Body



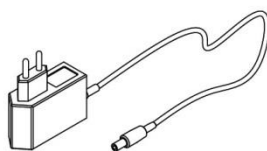
User's Manual



Driver File for Windows



USB Cable



Adapter



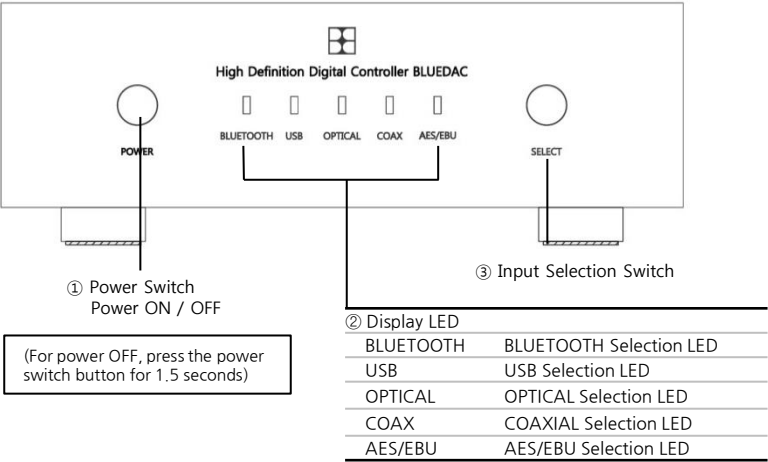
Antenna

The image of this product manual is for user's understanding and may differ from the actual product and may be changed without prior notice.

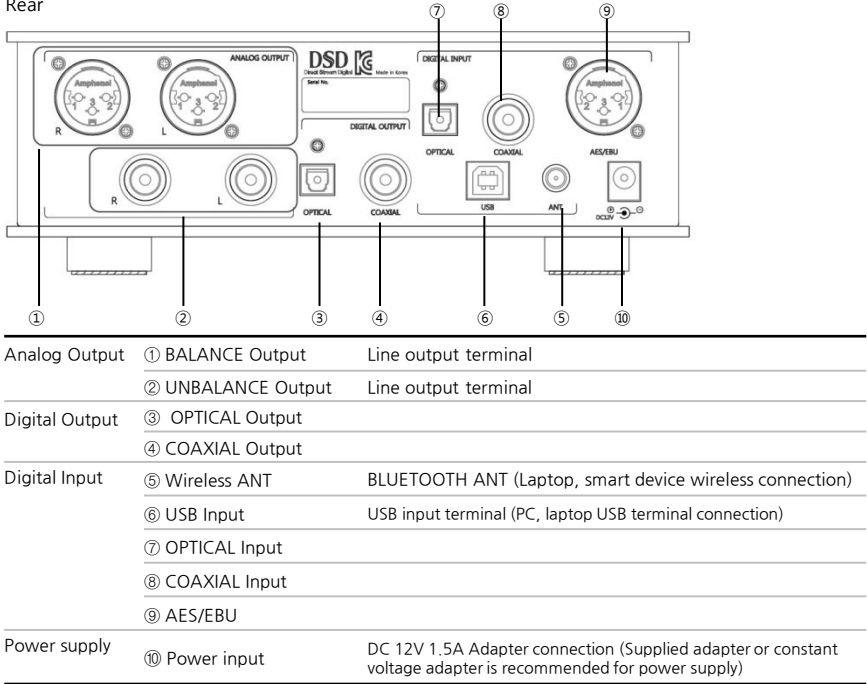
Other ones than basic components can be purchased separately.

Product Structure

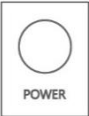
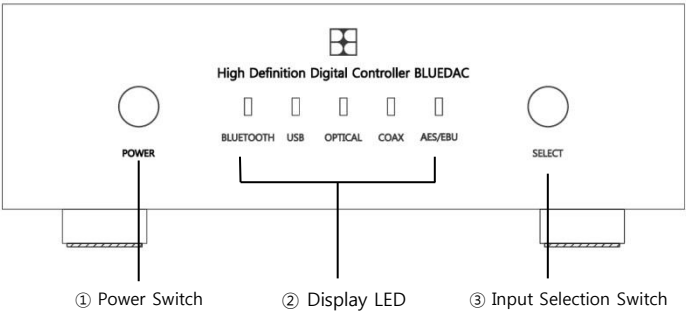
Front



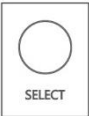
Rear



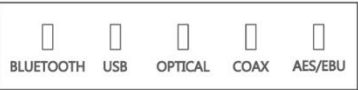
Product Usage



- ① POWER (Power switch)
- | | |
|-----|--------------------------------------|
| ON | Press briefly. |
| OFF | Press for about 1.5 seconds or more. |



- ③ Input select switch
- | |
|--|
| |
| |



- ② Display LED (when power is ON)
- | | |
|------------------------------------|------------------------|
| Default select | USB LED ON (Red color) |
| When Select (③) button is selected | Move one by one |



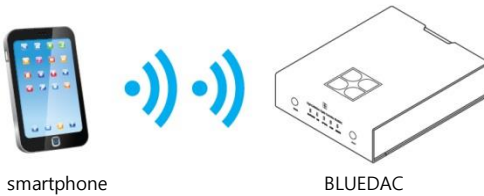
Select BLUETOOTH		
When connection is selected	When connected	PLAY
Flashing red	Flashing red	Fixing orange



Select USB input		(OPTICAL, COAX, AES / EBU selection LED simultaneously displays DSD sound source resolution.)				
When input is selected		Red				
PLAY		Orange				
		BLUETOOTH	USB	OPTICAL	COAX	AES/EBU
PLAY	DSD64					
	DSD128					
	DSD256					
	일반(PCM)					

Wireless Configuration Method

1. Set up wireless (Bluetooth) with smartphone



1) Connect BLUEDAC.



2) When the connection is completed, the red LED lights up.

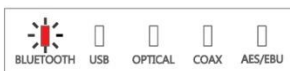


3) If you play music, video playback, YouTube, and other playable apps, the sound source will be output.

4) If BLUEDAC outputs audio source, orange LED keeps ON and outputs sound source..



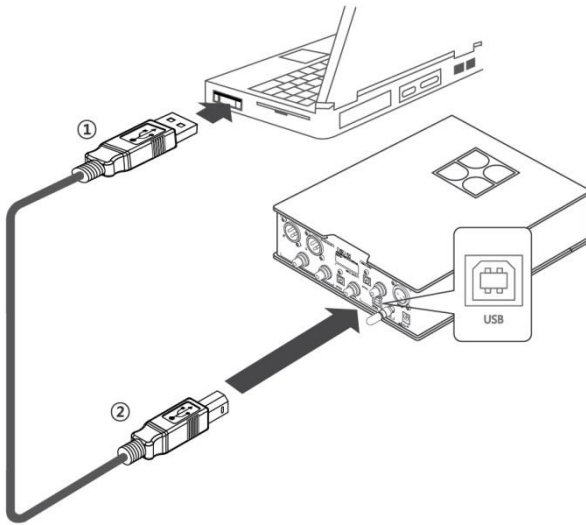
5) If the connected device disappears without ending the connection, it goes into connection standby mode. At this time, the connection standby red LED will blink.



Installing the Driver

1. Connecting with computer

Connect the USB cable to the computer and the BLUEDAC body in the correct direction.



Press the Power button to turn on the power.

If the driver file is not installed, the USB select LED will be displayed in red on the front panel.
The driver file is displayed in green when installation is completed normally.

2. Installing the USB driver

- Installing the WINDOWS Driver

When the USB port is connected, "Add New Hardware Wizard" will appear as Plug & Play function as shown below. * Windows 7, 8 and 10 do not pop up the installation pop-up window.



<WINDWOS XP>

Press "Cancel" as shown above and select the driver file of the enclosed USB memory according to the Windows environment,

If you select "Next" as shown below, the driver will be installed automatically.

(Note that the above window doesn't appear in Windows 7, 8, and 10, so just install the driver.)

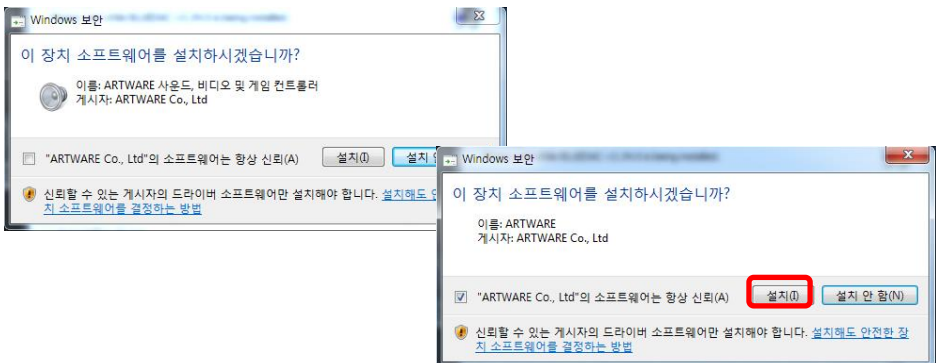
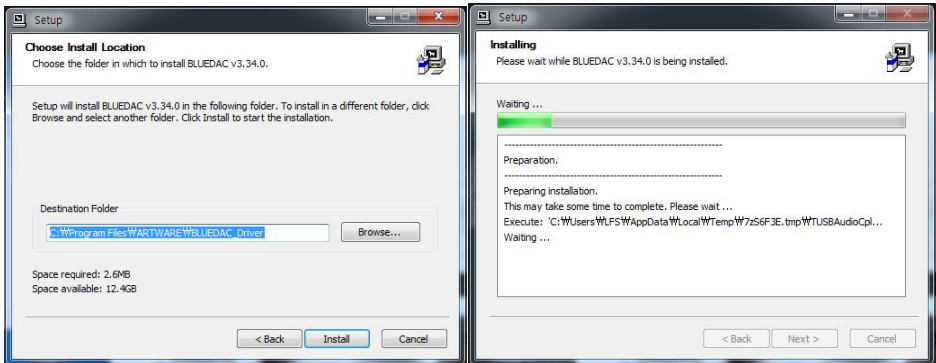
<WINDOWS Vista>

Installing the Driver

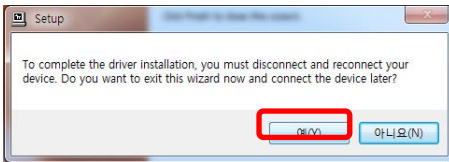
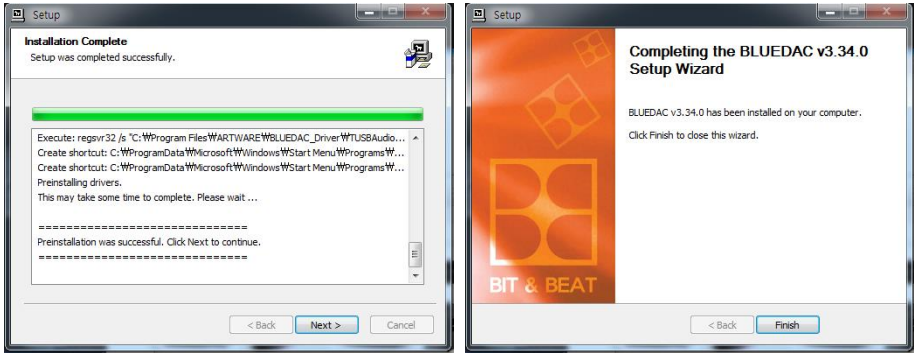
Insert the supplied USB and execute the installation file.
(BITnBEAT_BLUEDAC_DriverSetup_v3.34.0.exe)



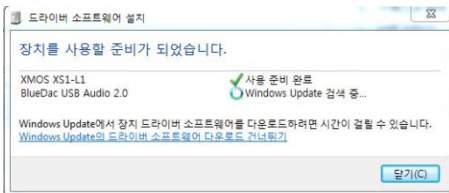
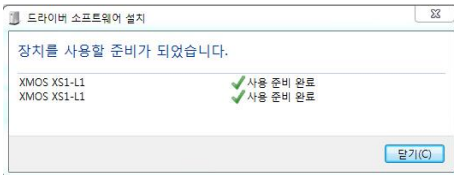
* For the driver file, refer to the USB memory included with the product.



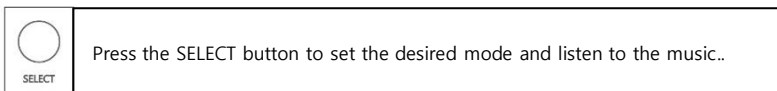
Installing the Driver



After selecting Yes, disconnect BLUEDAC Audio from the computer and connect it again.



If BLUEDAC is not recognized after installing the driver, please check Windows Update and keep it up to date.



** How to install Mac

- MAC OS can be recognized automatically without any driver installation.

Product Specifications

ITEM	SPECIFICATION	CONTENTS
Model name		BA-050AW BLUEAMP
Dimension	W x H x D [mm]	200mm × 60mm × 240mm (Terminals and ANT excluded)
Weight	kg	About 1.6kg
Input		Bluetooth radio input (PC, smartphone wireless connection support) USB input terminal OPTICAL input terminal COAXIAL input terminal AES/EBU input terminal
Output	Analog	BALANCE Output Terminal (XLR) UNBALANCE Output Terminal (RCA)
	Digital	OPTICAL Output Terminal COAXIAL Output Terminal
Radio Communication	Bluetooth	ISM 2.4GHz Communication distance : 10m (CLASSII) 지원코덱 : APT-X, SBC (if connected to an APT-X unsupported device, it is automatically changed to the SBC type)
LED	Bluetooth	Select Bluetooth Input.
	USB	Select USB Input.
	OPTICAL	Select OPTICAL Input (On if inputting DSD64)
	COAXIAL	Select COAXIAL Input (On if inputting DSD128)
	AES/EBU	Select AES/EBU Input On if inputting (DSD256)
S/N		110dB
Output Impedance		300 ohm
Service temperature		0°C ~ 40°C
Power		12V / 1.5A
Power Consumption		4.8W
Support Sampling	USB	Max 32bit 384kHz
	Native DSD	DSD64 (2.8MHz) / DSD128 (5.6MHz) /DSD256 (11.2MHz)
	DXD	DXD 24bit 352.8kHz ~ 32bit 384 kHz
	PCM	Bit depth : 16/24/32 bit Sample rate : 44.1,48.0,88.2,96.0,176.4,192.0,352.1,384kHz
	Digital In/Out	S/PDIF Optical, Coaxial on TOS-LINK 44.1~192kHz IEC-60958, S/PDIF Compatible
features		X-MOS Chip set applied Choice of German Thesycon's official driver, Native DSD Play ESS (ES9018K2M) D/A Converter Chip set High precision analog and digital power circuit, 25MHz Optical Input/Output terminals for high sound quality processing Bluetooth high sound quality apt-X Codec Support One touch mode change switch and Mode change switch and Power switch Selection state and motion LED by mode

Safety Precautions

- Use only accessories authorized by the seller or manufacturer.
If accessories or components are not the ones authorized by the seller or manufacturer, there is a risk of injury, overheating or fire due to abnormal operation.
The seller or the manufacturer cannot be held responsible for any damage or malfunction caused by the user's arbitrary change or modification.
- Do not handle this device with wet hands, as the unit is an electronic device that is supplied with power. Handling with wet hands may cause serious injury due to electric shock.
- This device uses the Bluetooth function, which may interfere with reception by obstacles and may prevent normal transmission.
Please use the device where there is no obstacle between the product and the transmission device.
- Do not disassemble or repair it arbitrarily. There is a risk of electric shock.
- Avoid hot spots with firearms and stoves and flammable materials. There is a risk of fire.
- Avoid places with high humidity. It may cause electric shock or malfunction.
- Please be careful not to drop or to shock when connecting external device. It may be damaged.
- Insert the power plug firmly. Shaking or unstable condition may cause fire or other accidents.
- Do not use various devices at the same time with a multi-outlet. There is a risk of fire due to overheating. Be careful that the power cord will not be pressed against or caught by heavy objects such as furniture. Replace the damaged power cord immediately.
There is a risk of electric shock.
- Please unplug the power cord during a thunder storm. Overcurrent can damage the product.
- Do not place containers with liquids, vases, cups, or lights or candles, etc. near the product. Failure to do so may result in fire or electric shock.
- Please remove the power plug if foreign objects get into the product or it is damaged by accident such as falling. There is a risk of fire or electric shock.
- When cleaning the product, please use a dry towel. There is a risk of electric shock or product deformation.
- The copyright of this manual belongs to BIT & BEAT.
- Unauthorized use or reproduction of part or all of the contents of this manual without prior permission is prohibited.
- We are not responsible for any damages caused by improper use or modification of the product or loss of documents.
- We are not responsible for any defects or damages caused by user's failure / natural disaster during use of this product.
- Any damage caused by any disassembly or modification of this product by a person other than the employee of the Customer Support Center shall be regarded as negligence of the user.

How to Fix Problems

Until the user is accustomed to working with BLUEDAC, he or she may experience operational difficulties. This manual will help the user solve the most common problems.

The power is not turned on.

- + Please check if the power cable is properly connected to the adapter, and that the DC cable of the adapter is properly connected to the product.

The product does not sound.

- + Please check if the cable is properly connected to the input and output terminals of the product.

Sound quality is poor and distorted.

- + Are all the cables connected correctly? If necessary, turn off the power, disconnect the connector, and then reconnect it.

Sound quality is poor and distorted.

- + Is the driver provided on the computer installed and working properly?
- + Are you using a genuine USB cable?

What to do if wireless connection fails

- + If the wireless connection is terminated abnormally, the connection information of the device may be erroneous.

- + After removing the registered device from + Preferences -> Bluetooth on

You can reconnect by selecting + BLUEDAC BA-384AW.

- + Please select BLUEDAC BA-384AW through search and you can reconnect it.



What to do if there is no sound

- + Check if power is being supplied properly.
- + Check if the cable connection to the connected device is correct.
- + Check if you have a wireless connection with Bluetooth.
- + Check if the volume of the connected device is turned off.

! This product requires aging time due to the characteristics of the device.

! If you have any questions about using BLUEDAC devices, please contact the dealer from you purchased

Product Warranty

About the Product

- Based on the consumer compensation regulations, a warranty for the product will be provided, as shown below.

Product name		Purchase date	____ (year), ____ (month), ____ (day)	Serial No.	
Model name		Where to purchase		Sale price	

Warranty period:
1 (one) year
from date of
purchase

Consumer damage types		failures and defects in performance, functions that occurs naturally during normal use within retention period of the parts	Compensation details	
			Within the warranty period	After the warranty period
If the product is in need of major repairs within 10 days after purchased			Product replacement or refund of the purchase price	-
If critical parts are in need of repairs within 1 month after purchased			Product replacement	
If the replaced product is in need of major repairs within a month after replaced			Refund of the purchase price	
When replacement of parts is not possible				
Repairs available	If defects in the product are caused		Free repair	Paid repair
	After repairing, the same defects of a product are generated 4th times		Product replacement or refund of purchase price	-
Repair is not possible	Failures of the various parts are repaired, but a failure is regenerated (5th times)			
	When repair is not possible			
	If a repair person lost the product for repair requested by the Consumer			
Damage caused during transportation and installation process when purchasing products			Product replacement	-

*Refunds: Refund the purchase price (receipts to be submitted)
Please contact us for maintenance and repair at following phone number.
If you send us brief information about a fault condition in case of a failure, it will be more convenient.

- The following failures will be treated at cost.
- Failure due to user negligence
 - Connection to the power supply other than rated power
 - Failure due to user negligence
 - Deliberate disassembly and repair by the user
 - Breakdown by natural disasters (fire, flood, earthquake, lightning, etc.)
 - When supplies are replaced